



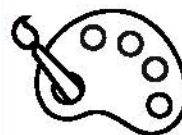
VITRIFIED PORCELAIN

Made of clay that's malleable and great for forming detailed shapes. Created in a two firing process where it becomes vitrified during the second firing, making porcelain an extremely durable dinnerware option that is dishwasher, microwave, and oven safe.



ROLLED EDGE DESIGN

Designed to complement, the rolled-edge design is perfect for modern dining experiences. Stunning and contemporary, this design style showcases individuality and elegance.



DESIGNED TO MIX AND MATCH

Stylish and functional, this collection had been skillfully created to coordinate beautifully with other pieces in the ranges. Add a layered effect by mixing and matching with other ranges to create a unique combination.



Scan here to instantly be directed to **Tablekraft Vitroceram** on our website to view all ranges, new releases and additional information.

VITROCERAM

CLASSIC, TRADITIONAL AND UNIVERSAL, VITROCERAM IS A COMPREHENSIVE RANGE OF TABLEWARE THAT BRINGS A TIMELESS STYLE TO YOUR TABLE. THIS RANGE OFFERS A CLEAN, SIMPLE BASE FOR DISPLAYING STYLISH FOOD PRESENTATIONS.



ROUND PLATE NARROW RIM

Item Code 902606
Diameter 160mm
Height 20mm



ROUND PLATE NARROW RIM

Item Code 902607
Diameter 180mm
Height 23mm



ROUND PLATE NARROW RIM

Item Code 902609
Diameter 230mm
Height 25mm



ROUND PLATE NARROW RIM

Item Code 902610
Diameter 257mm
Height 26mm



ROUND PLATE ROLLED EDGE

Item Code 904206
Diameter 167mm
Height 20mm



ROUND PLATE ROLLED EDGE

Item Code 904208
Diameter 205mm
Height 25mm



ROUND PLATE ROLLED EDGE

Item Code 904209
Diameter 232mm
Height 28mm



ROUND PLATE ROLLED EDGE

Item Code 904210
Diameter 257mm
Height 28mm



OVAL PLATTER

Item Code 901609
Dimensions 240x170mm
Height 23mm
Capacity -



OVAL PLATTER

Item Code 901611
Dimensions 290x203mm
Height 26mm
Capacity -



OVAL PLATTER

Item Code 901614
Dimensions 355x262mm
Height 38mm
Capacity -



SWEET / FRUIT BOWL

Item Code 900130
Diameter 138mm
Height 33mm
Capacity 200ml



SOUP / CEREAL BOWL

Item Code 900140
Diameter 172mm
Height 47mm
Capacity 450ml



PASTA BOWL

Item Code 900146
Diameter 232mm
Height 45mm
Capacity 300ml



PASTA / SALAD BOWL

Item Code 900147
Diameter 178mm
Height 70mm
Capacity 850ml



PASTA / SALAD BOWL

Item Code 900148
Diameter 209mm
Height 76mm
Capacity 1250ml

VITROCERAM

CLASSIC, TRADITIONAL AND UNIVERSAL, VITROCERAM IS A COMPREHENSIVE RANGE OF TABLEWARE THAT BRINGS A **TIMELESS STYLE** TO YOUR TABLE. THIS RANGE OFFERS A **CLEAN, SIMPLE BASE** FOR DISPLAYING STYLISH FOOD PRESENTATIONS.



PASTA / SALAD BOWL

Item Code 900149
Diameter 238mm
Height 88mm
Capacity 1900ml



RICE / NOODLE BOWL

901550
140mm
75mm
500ml



RICE / NOODLE BOWL

901551
180mm
99mm
1750ml



RICE / NOODLE BOWL

901552
205mm
112mm
2000ml



RICE BOWL

Item Code 901540
Dimensions 100mm
Height 52mm
Capacity 200ml



RICE BOWL

901544
115mm
60mm
300ml



OVAL GRATIN DISH

901346
215x100mm
35mm
240ml



OVAL GRATIN DISH

901347
250x125mm
37mm
380ml



OVAL GRATIN DISH

Item Code 901348
Diameter 278x142mm
Height 40mm
Capacity 530ml



OVAL GRATIN DISH

901349
310x163mm
47mm
660ml



OVAL BAKER

901352
128x90mm
56mm
250ml



OVAL BAKER

901341
154x102mm
40mm
250ml



OVAL BAKER

Item Code 901353
Diameter 175x123mm
Height 55mm
Capacity 550ml



OVAL BAKER

901354
223x160mm
55mm
950ml



RECTANGULAR BAKER

901385
265x175mm
48mm
1300ml



RECTANGULAR BAKER

901383
317x215mm
55mm
2350ml

VITROCERAM

CLASSIC, TRADITIONAL AND UNIVERSAL, VITROCERAM IS A COMPREHENSIVE RANGE OF TABLEWARE THAT BRINGS A TIMELESS STYLE TO YOUR TABLE. THIS RANGE OFFERS A **CLEAN, SIMPLE BASE** FOR DISPLAYING STYLISH FOOD PRESENTATIONS.



CASSEROLE DISH WITH COVER

Item Code	901372
Diameter	137mm
Height	90mm
Capacity	330ml



CASSEROLE DISH WITH COVER

Item Code	901373
Diameter	157mm
Height	106mm
Capacity	550ml



CASSEROLE DISH WITH COVER

Item Code	901374
Diameter	185mm
Height	120mm
Capacity	1000ml



CASSEROLE DISH WITH COVER

Item Code	901375
Diameter	210mm
Height	145mm
Capacity	2000ml



SOUFFLE DISH

Item Code	901310
Diameter	75mm
Height	35mm
Capacity	90ml



SOUFFLE DISH

Item Code	901311
Diameter	85mm
Height	41mm
Capacity	120ml



SOUFFLE DISH

Item Code	901312
Diameter	95mm
Height	45mm
Capacity	160ml



SOUFFLE DISH

Item Code	901314
Diameter	105mm
Height	56mm
Capacity	250ml



SOUFFLE DISH

Item Code	901315
Diameter	176mm
Height	83mm
Capacity	1100ml



CUSTARD CUP

Item Code	901323
Diameter	93mm
Height	60mm
Capacity	200ml



BUTTER CROCK

Item Code	900035
Diameter	63mm
Height	27mm
Capacity	-



SAUCE / BUTTER DISH

Item Code	901004
Diameter	102mm
Height	26mm
Capacity	80ml



CHINESE TEA CUP

Item Code	900802
Diameter	77mm
Height	53mm
Capacity	100ml



CHINESE SPOON

Item Code	902904
Dimensions	130x43mm
Height	40mm
Capacity	10ml



CHINESE SPOON

Item Code	902903
Dimensions	140x45mm
Height	44mm
Capacity	20ml

VITROCERAM

CLASSIC, TRADITIONAL AND UNIVERSAL, VITROCERAM IS A COMPREHENSIVE RANGE OF TABLEWARE THAT BRINGS A **TIMELESS STYLE** TO YOUR TABLE. THIS RANGE OFFERS A **CLEAN, SIMPLE BASE** FOR DISPLAYING STYLISH FOOD PRESENTATIONS.



SALT SHAKER

Item Code 900151
Diameter 37mm
Height 90mm
Capacity -



PEPPER SHAKER

900161
37mm
90mm
-



CAPPUCCINO CUP

900006
100mm
61mm
250ml
900020 Saucer To Suit



STACKABLE CUP

900010
85mm
68mm
250ml
900020 Saucer To Suit



UNIVERSAL SAUCER

Item Code 900020
Dimensions 145mm
Height 23mm
Capacity -



TAPERED MUG

900603
78mm
90mm
270ml



CAN SHAPE MUG

900012
80mm
98mm
350ml



CREAMER

900115
106mm
77mm
180ml



TEAPOT

Item Code 909120
Diameter 178mm
Height 76mm
Capacity 500ml



TEAPOT

909130
208mm
83mm
800ml



SUGAR PACKET HOLDER

901328
95x68mm
65mm
-

